

Racing Series

P-Line

PL4500



VERTAGEAR

Introduction



The PL4500 is designed for comfort and equipped with superior ergonomic features. The industrial strength, extra padded gaming chair provides greater support and durability for your entire frame and head. The Plus Line (PL) is the perfect fit for users desiring more space. Assembled with a wide range of adjustability that enhances gamers' personal comfort, relax for extended periods during your intense gaming sessions.

Features

Coffee Fiber Padding

The PL4500's backrest and seat is padded with high quality Coffee Fiber, produced through a patented technology, enabling the material to exhibit unique properties, including being odor control and quick drying for added hygiene and comfort.



A close-up, low-angle shot of a black racing helmet. The helmet is positioned on the left side of the frame, curving towards the right. The word "VERTAGEAR" is embroidered in a bold, sans-serif font across the side of the helmet. The embroidery is made of a metallic silver thread, which stands out against the dark fabric. The background is a bright, overexposed white, creating a high-contrast scene. The lighting highlights the texture of the helmet's material and the raised nature of the embroidery.

VERTAGEAR

Silver Lining

The PL4500's embroidery is made out of silver thread. Silver is long hailed for its antibacterial properties. Silver interrupts bacteria's ability to form chemical bonds critical to its survival, so when bacteria meets silver, it falls apart.

Ultra Premium High Resiliency Foam

Our interior foam boasts a density that puts it well above the standard High Resiliency foam. Where High Resiliency foam sits at approximately 2.5lbs per cubic foot, our foam stands up to 4lbs per cubic foot, inching it near the realm of memory foam. The elasticity of the foam helps prolong the comfort life of the chair and adds to the overall durability of the product.





Heavy Duty Metal Base Frame

The PL4500's heavy duty base frame is constructed with industrial strength metal to support up to 180 kg / 400 lbs of weight, for long lasting comfort.

Soft-Glide Wheels

The PL4500 comes with 65mm/2.5" PENTA RS1 casters that are engineered for quieter operation and greater resistance to foreign objects and debris, rolling effortlessly on all types of flooring while preventing damage to the surface beneath.





Effortless Assembly

A patent pending "Slide-In" design mechanical structure that requires no more than one person to assemble.

Extra Accessories: Cushions

Additional Memory Foam Neck Support and Lumbar Support cushions are included.

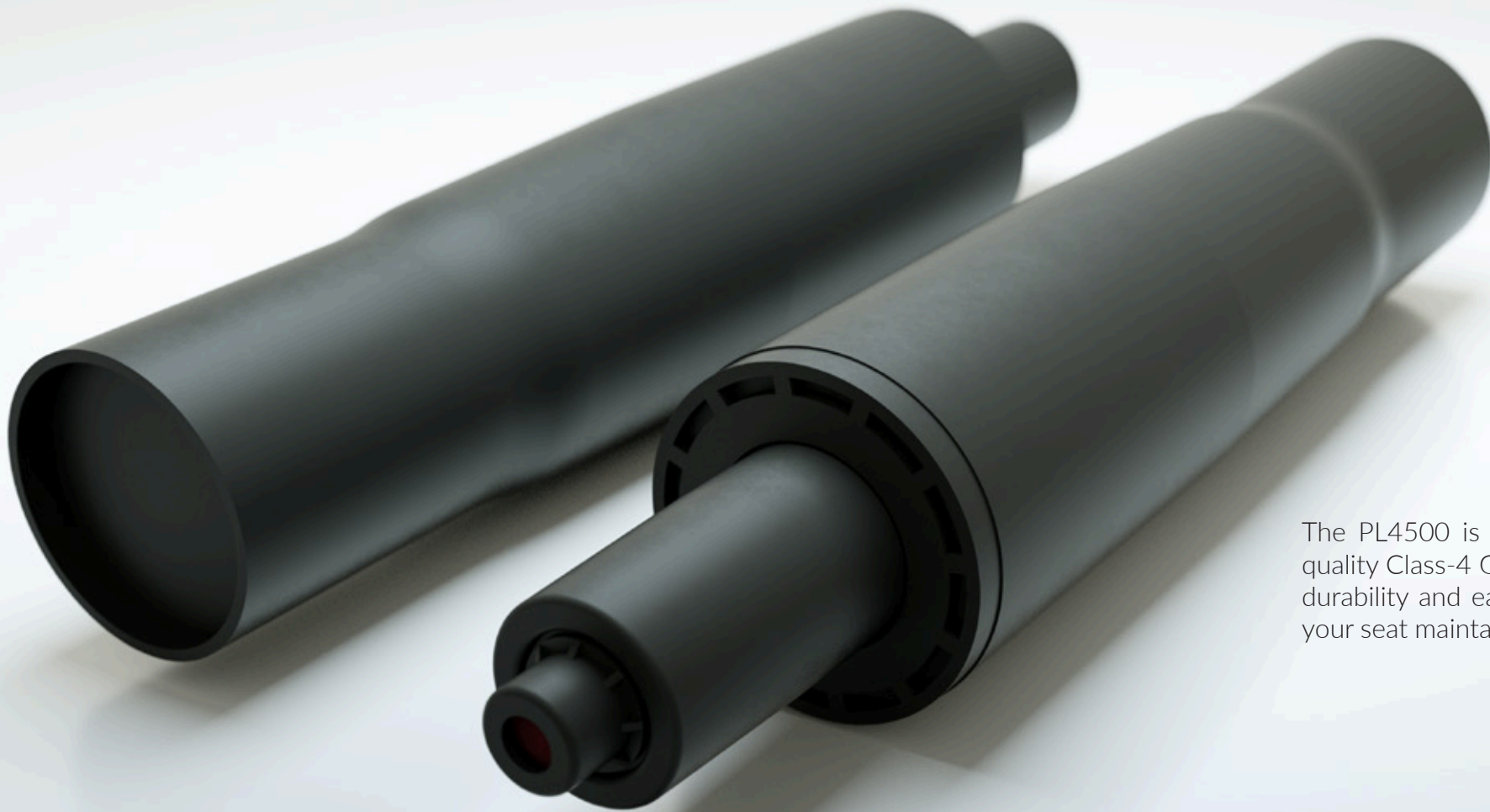


Additional Features

Steel Frame

A sturdy and rigid steel frame support ensures long lasting durability, while keeping the chair secure, stable, and comfortable at all times.





Gas Lift

The PL4500 is fitted with an industrial-quality Class-4 Gas Lift cylinders for extra durability and ease of use, while keeping your seat maintained at the proper height.

Penta RS1 65mm/2.5" Caster

Custom racing style caster coated with polyurethane (PU) for soft and smooth gliding on any surface. (color matching chair)



Addons



LED Upgrade Kit

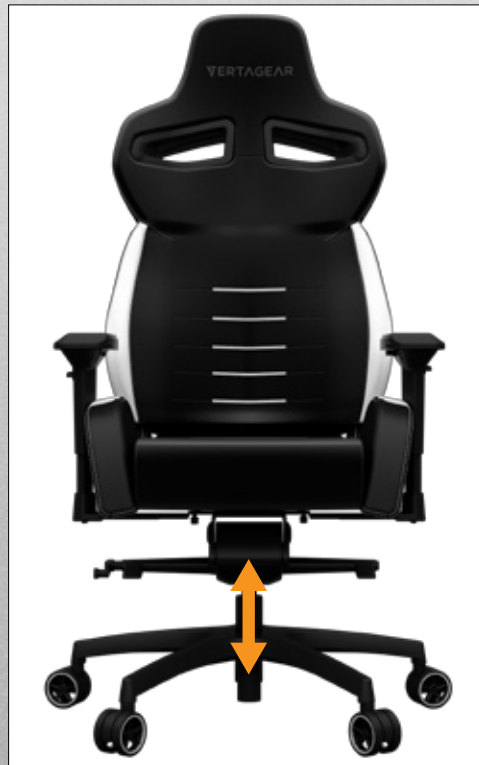
The PL4500 can be upgraded with wirelessly controlled, full spectrum RGB LED lighting kits, to bring your gaming sessions to the next level.

(Note: LED Upgrade Kits are sold separately)

Adjustability

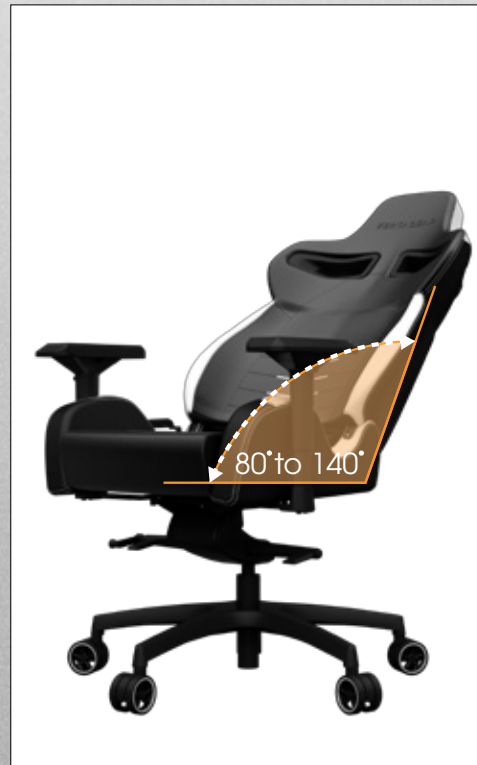
Adjustable Seat Height

The PL4500's seat and height adjustability ensures correct ergonomic posture and prevents stress to your back. Having good range of adjustability allows you to be at an optimum angle in relation to your desk, this reduces back and neck pains.



Adjustable Backrest

Features independent back angle option. An angle-adjustable backrest to help you adjust your sitting position throughout the course of your gaming experience (up to 140 degrees).



Adjustable Tilt with Locking System

Our adjustable tilt tension mechanism allows you to increase or decrease the tension by easily turning the knob to match your body weight. This allows you to rock comfortably, without heavy pushing, reducing muscle fatigue. In addition, the Racing Series P-Line can be locked into 4 different tilted positions, truly putting you in a driver's seat.

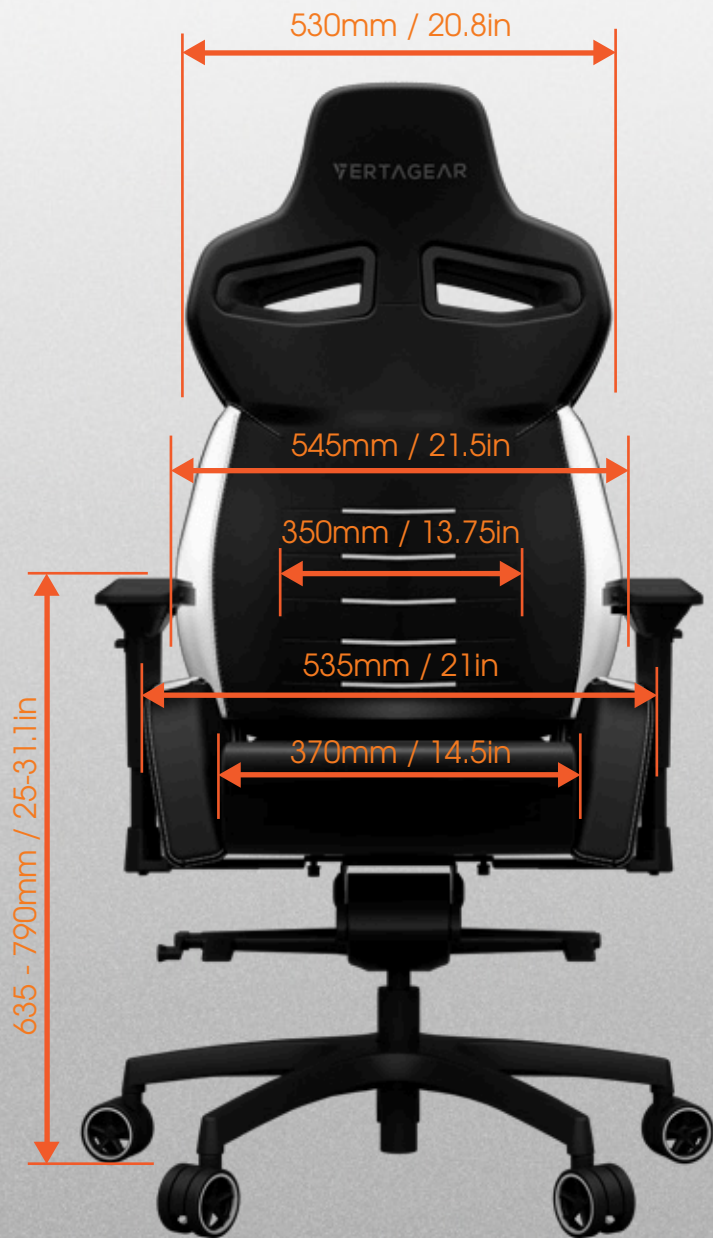


Adjustable 3D Armrests

Ergonomically designed to contour to the shape of the arm, the armrests can be adjusted in 3 different points to provide proper support to the forearm.



Product Dimensions



Specifications & Color Options



VG-PL4500_BK

VG-PL4500_RD

VG-PL4500_GR

VG-PL4500_BL

VG-PL4500_PL

VG-PL4500_WT

Model:	VG-PL4500	Overall height (incl. base):	1310 - 1375 mm / 51.6 - 54.1 in
Colors:	Black, Black / Red, Black / Green, Black / Blue, Black / Purple, Black / White, Black	Backrest Width (shoulder):	530 mm / 20.8 in
Max Load:	180 kg / 400 lb	Backrest Width (lumbar):	545 mm / 21.5 in
Materials:	Steel (frame), High Density Foam, PVC Leather, Aluminum Alloy (base)	Seat Width:	535 mm / 21 in
Package Dimension:	89 x 80 x 39 cm / 35 x 31.5 x 15 in	Seat Depth:	445 mm / 17.5 in
		Net Weight:	25.5 kg / 56.1 lbs
		Gross Weight	30 kg / 66 lb
		Container:	145 pcs (20') 352 pcs (40'HQ)

VERTAGEAR

Comfort. Design. Vertagear.