

Racing Series

S-Line

PL6000



VERTAGEAR

Table of Contents

Introduction	02
Highlight Features	
• Effortless Assembly	03
• Steel Frame	04
• Ultra Premium High Resiliency Foam	05
• Elegant, Durable Exterior	06
Additional Features	
• Penta RS1 65mm/2.5" Caster	07
• Soft Glide Wheels / Aluminum Alloy Foot	08
• Gas Lift	09
• Extra Accessories: Cushions	10
Adjustability	11
Product Dimensions	12
Specifications & Color Options	13
Web Content	15-18



Introduction

The PL6000 is designed for comfort and equipped with superior ergonomic features. The industrial strength, extra padded gaming chair provides greater support and durability for your entire frame and head. The Plus Line (PL) is the perfect fit for users desiring more space. Assembled with a wide range of adjustability that enhances gamers' personal comfort, relax for extended periods during your intense gaming sessions.

Recommended Height: 5'9" - 6'8".



Highlight Features




Effortless Assembly

A patent pending “Slide-In” design mechanical structure that requires no more than one person to assemble.

Steel Frame

A sturdy and rigid steel frame support ensures long lasting durability, while keeping the chair secure, stable, and comfortable at all times.





Ultra Premium High Resiliency Foam

Our interior foam boasts a density that puts it well above the standard High Resiliency foam. Where High Resiliency foam sits at approximately 2.5lbs per cubic foot, our foam stands up to 4lbs per cubic foot, inching it near the realm of memory foam. The elasticity of the foam helps prolong the comfort life of the chair and adds to the overall durability of the product.

Heavy Duty Metal Base Frame

The PL6000's heavy duty base frame is constructed with industrial strength metal to support up to 200 kg / 440 lbs of weight, for long lasting comfort.





Large Soft Glide Casters

The PL6000 comes with 75mm/3" PENTA RS1 casters that are engineered for quieter operation and greater resistance to foreign objects and debris, rolling effortlessly on all types of flooring while preventing damage to the surface beneath.



Elegant, Durable Exterior

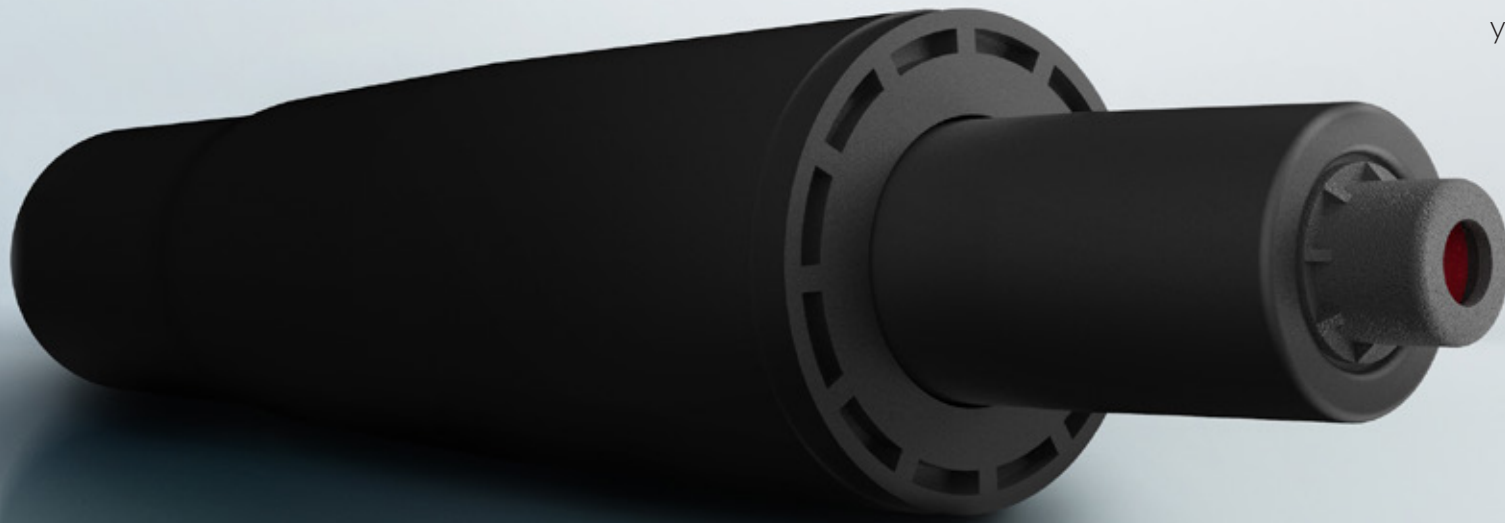
Made from premium quality PVC leather with stain resistant characteristics, the PL6000 has an extra dense foam padding that adds great support and comfort. The breathable open-cell structure limits heat being trapped.

Additional Features

Penta RS1 65mm/2.5" Caster

Custom racing style caster coated with polyurethane (PU) for soft and smooth gliding on any surface. (color matching chair)





Gas Lift

The PL6000 is fitted with an industrial-quality Class-4 Gas Lift cylinders for extra durability and ease of use, while keeping your seat maintained at the proper height.

Extra Accessories: Cushions

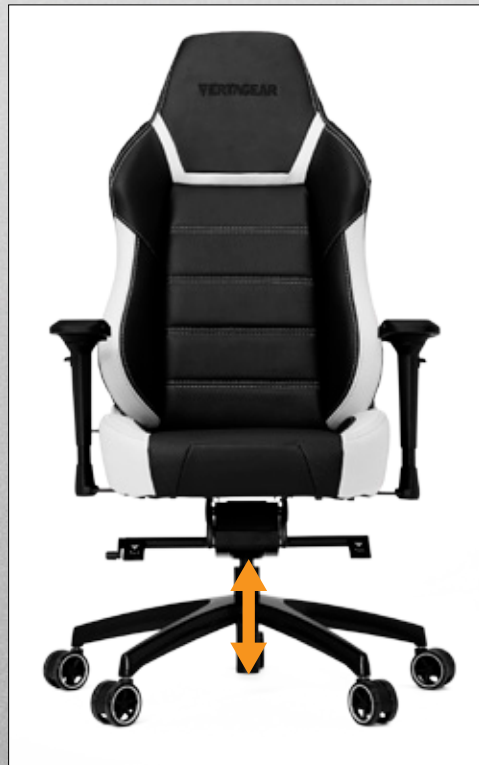
Additional Memory Foam Neck Support and Lumbar Support cushions are included.



Adjustability

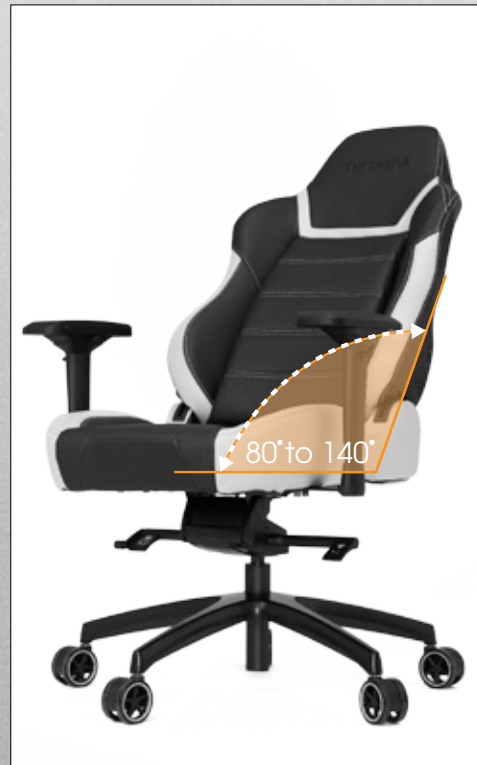
Adjustable Seat Height

The PL6000's seat and height adjustability ensures correct ergonomic posture and prevents stress to your back. Having good range of adjustability allows you to be at an optimum angle in relation to your desk, this reduces back and neck pains.



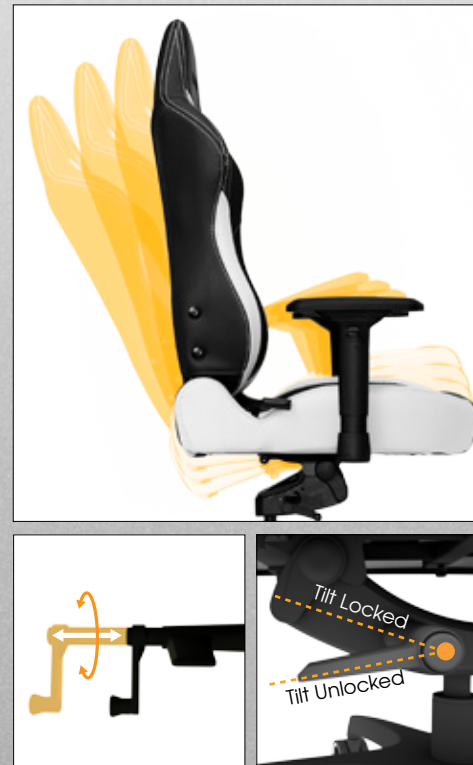
Adjustable Backrest

Features independent back angle option. An angle-adjustable backrest to help you adjust your sitting position throughout the course of your gaming experience (up to 140 degrees).



Adjustable Tilt with Locking System

Our adjustable tilt tension mechanism allows you to increase or decrease the tension by easily turning the knob to match your body weight. This allows you to rock comfortably, without heavy pushing, reducing muscle fatigue. In addition, the Racing Series P-Line can be locked into 4 different tilted positions, truly putting you in a driver's seat.



Adjustable 4D Armrests

4D customizable armrest provides a natural support of the arms with greater range of width and height adjustments. Benefits includes better blood flow and eliminates pain and injury to the wrist and arms.



Product Dimensions



Specifications & Color Options



VG-PL6000_CB

VG-PL6000_RD

VG-PL6000_GR

VG-PL6000_BL

VG-PL6000_WT

Model:	VG-PL6000	Overall height (incl. base):	1285-1385 mm / 50.6-54.6 in
Colors:	Carbon Black / Red / Blue / Green / White	Backrest Width (shoulder):	510 mm / 20 in
Max Load:	200 kg / 440 lbs	Backrest Width (lumbar):	520 mm / 20.5 in
Materials:	Steel (frame), High Density Foam, PVC Leather, Aluminum Alloy (base)	Seat Width:	550 mm / 21.7 in
Package Dimension:	83 x 72 x 33 cm / 33 x 28 x 13 in	Seat Depth:	490 mm / 19 in
		Net Weight:	25.5 kg / 56.1 lbs
		Gross Weight	28.6 kg / 63 lbs
		Container:	145 pcs (20')
			352 pcs (40'HQ)

VERTAGEAR

Racing Series
PL6000



"You'll be hard pressed to find a better option"



"Vertagear's build quality is miles ahead."



"I fall into it, and never want to get out of it."

Vertagear P-Line PL6000 Racing Series Office Gaming Chair Rev. 2

The P-Line PL6000 is designed for comfort and equipped with superior ergonomic features. Industrial strength and extra-large construction on padding and headrest provide extra support and durability. The Plus Line is a great fit for users desiring more space. Designed to give wide range of adjustability that gives gamers the best comfort and support in every gaming position for extended period of time. High backrest is designed to provide neck, shoulder and lumbar support.

Recommended height: 5'9" - 6'8".

Highlight Features



Effortless Assembly

A patent pending "Slide-In" design mechanical structure that requires no more than one person to assemble.



Sturdy Steel Frame

Ensures long lasting durability, while keeping the chair secure, stable, and comfortable at all times.



Ultra Premium High Resiliency Foam

Our foam stands up to a density of 4lbs per cubic foot, compared to standard High Resiliency foam of only 2lbs, adding greater durability and comfort.



Large Soft Glide Casters

The PL6000 comes with 75mm/3" PENTA RS1 casters that operates quietly and rolls effortlessly on all types of flooring.



Heavy Duty Metal Base Frame

Constructed with industrial strength metal to support up to 200 kg / 440 lbs of weight, for long lasting comfort.

Additional Features



Penta RS1 Casters

Custom racing style caster coated with polyurethane (PU) for soft and smooth gliding on any surface. (color matching chair)



Extra Accessories: Cushions

Additional Memory Foam Neck Support and Lumbar Support cushions are included.

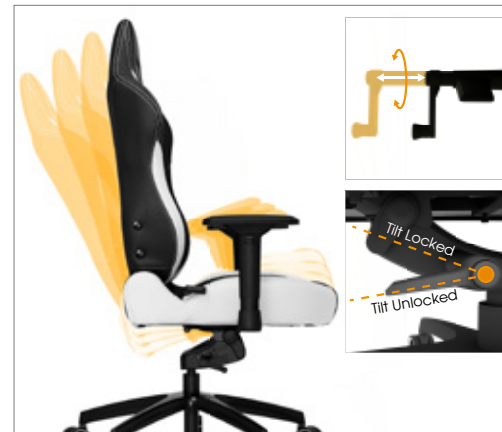
Adjustability



Adjustable Seat Height



Adjustable Backrest



Adjustable Tilt with Locking System



Adjustable 4D Armrests

BIFMA

SGS

EN1335

VERTAGEAR

Comfort. Design. Vertagear.

Vertagear brings inspired design and innovative features to gaming products. We want to enrich the lifestyle of gamers with products that are expressed through experiences and offer a greater appreciation of gaming products through our design.

VERTAGEAR

Comfort. Design. Vertagear.