

Racing Series

S-Line

SL5000



VERTAGEAR

Table of Contents

Introduction	02
Highlight Features	
• Effortless Assembly	03
• Steel Frame	04
• Ultra Premium High Resiliency Foam	05
• Elegant, Durable Exterior	06
Additional Features	
• Penta RS1 65mm/2.5" Caster	07
• Soft Glide Wheels / Aluminum Alloy Foot	08
• Gas Lift	09
• Extra Accessories: Cushions	10
Adjustability	11
Product Dimensions	12
Specifications & Color Options	13
Web Content	14-16



Introduction

A gamer's delight, the SL5000 will hit the sweet spot for extreme gamers. The racing-style gaming chair empowers your everyday gaming with the right features. Designed to give a wide range of adjustability that provides gamers with the best comfort and ergonomic support in every position for extended periods of time. The high backrest is designed to provide greater neck, shoulder, and lumbar support.



Highlight Features




Effortless Assembly

A patent pending "Slide-In" design mechanical structure that requires no more than one person to assemble.

Steel Frame

A sturdy and rigid steel frame support ensures long lasting durability, while keeping the chair secure, stable, and comfortable at all times.





Ultra Premium High Resiliency Foam

Our interior foam boasts a density that puts it well above the standard High Resiliency foam. Where High Resiliency foam sits at approximately 2.5lbs per cubic foot, our foam stands up to 4lbs per cubic foot, inching it near the realm of memory foam. The elasticity of the foam helps prolong the comfort life of the chair and adds to the overall durability of the product.



Elegant, Durable Exterior

Made from premium quality PVC leather with stain resistant characteristics, the SL5000 has an extra dense foam padding that adds great support and comfort. The breathable open-cell structure limits heat being trapped.

Additional Features

Penta RS1 65mm/2.5" Caster

Custom racing style caster coated with polyurethane (PU) for soft and smooth gliding on any surface. (color matching chair)



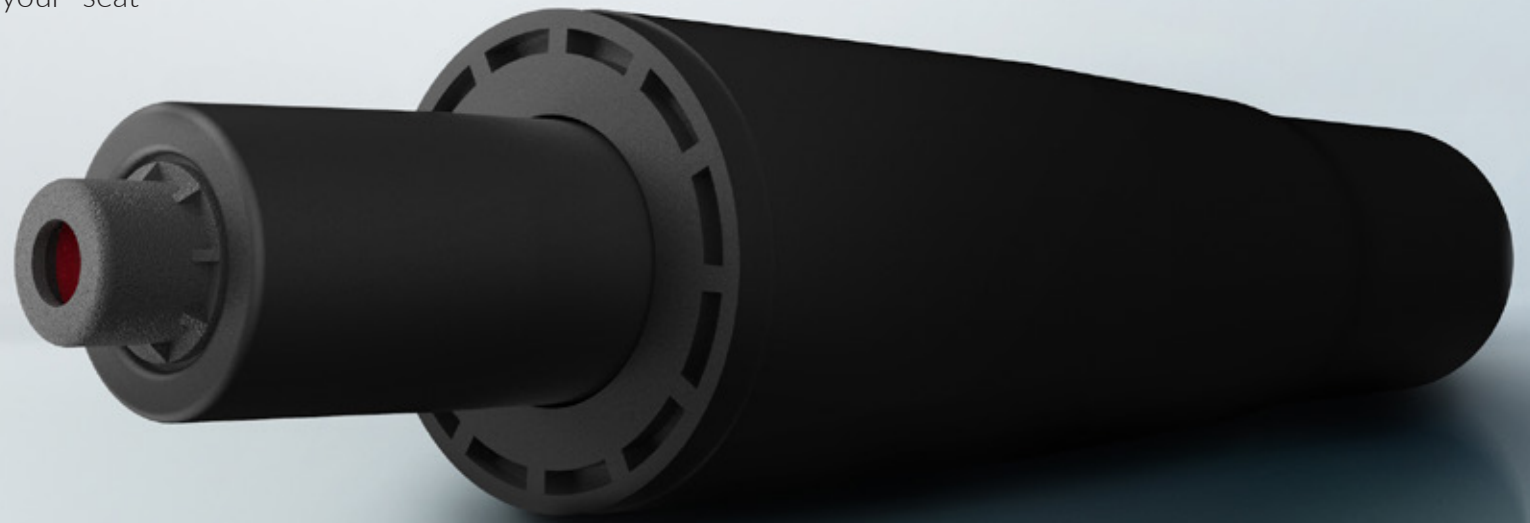


Soft-Glide Wheels / Aluminum Alloy Foot

The SL5000's wheels are engineered for quieter operation and greater resistance to foreign objects and debris. The 5-star base (made from aluminum alloy) keeps the chair solid, stable, and lightweight.

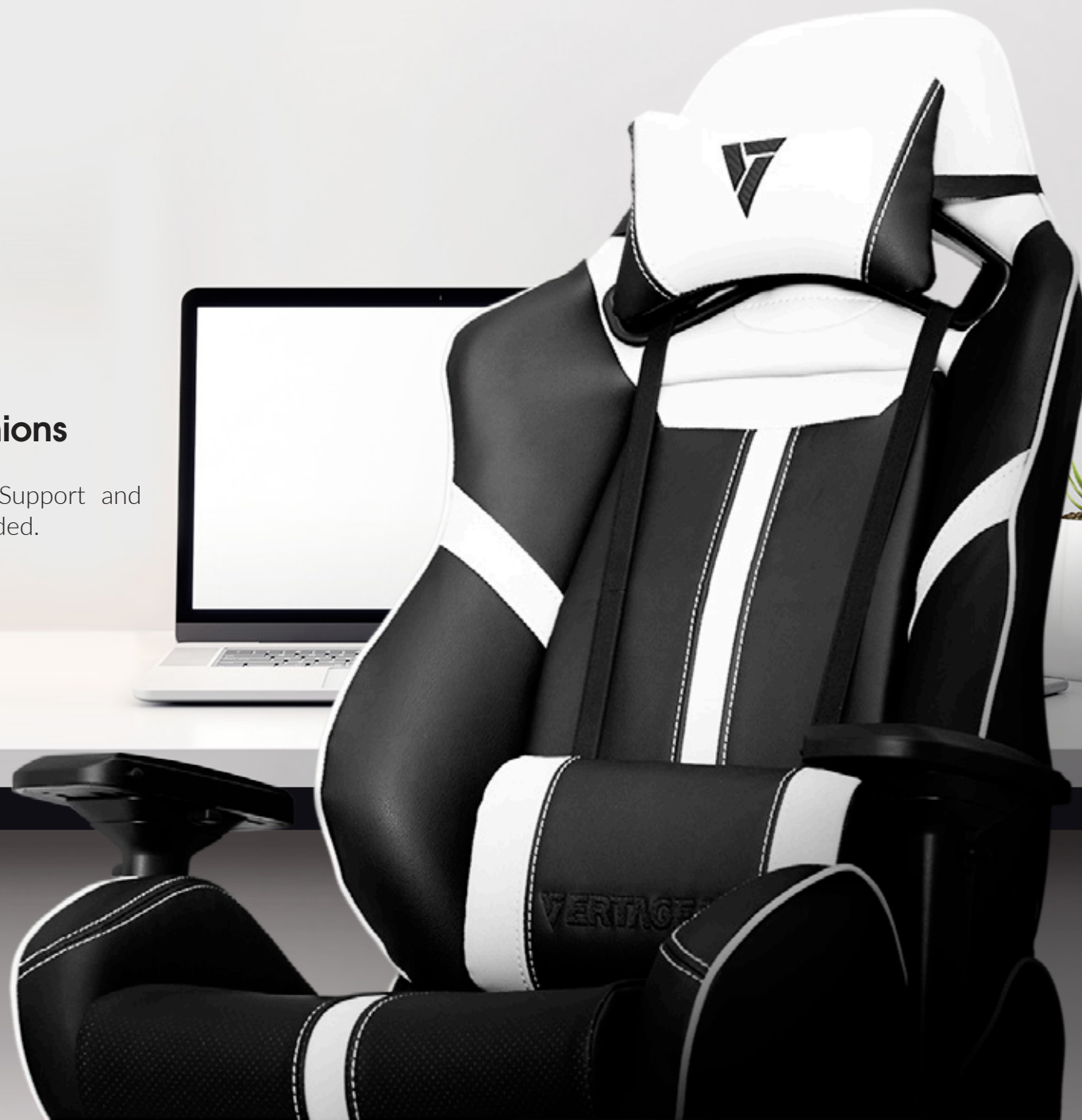
Gas Lift

The SL5000 is fitted with an industrial-quality Class-4 Gas Lift cylinders for extra durability and ease of use, while keeping your seat maintained at the proper height.



Extra Accessories: Cushions

Additional Memory Foam Neck Support and Lumbar Support cushions are included.



Adjustability

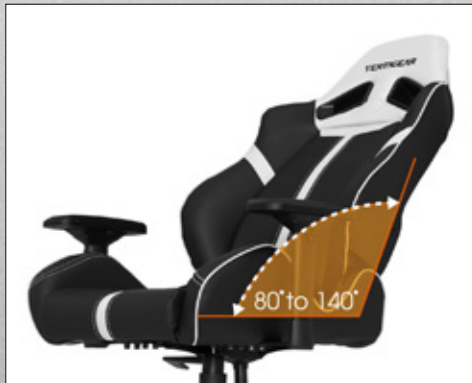
Adjustable Seat Height

The SL5000's seat and height adjustability ensures correct ergonomic posture and prevents stress to your back. Having good range of adjustability allows you to be at an optimum angle in relation to your desk, this reduces back and neck pains.



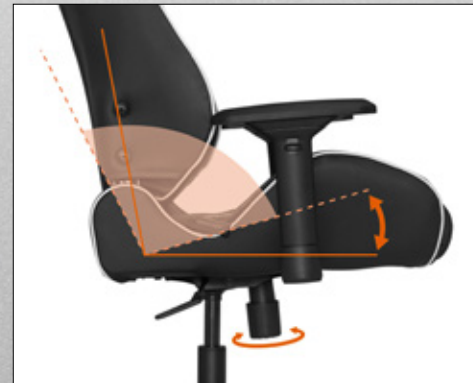
Adjustable Backrest

Features independent back angle option. An angle-adjustable backrest to help you adjust your sitting position throughout the course of your gaming experience (up to 140 degrees).



Adjustable Tilt with Locking System

Our adjustable tilt tension mechanism allows you to increase or decrease the tension by easily turning the knob to match your body weight. This allows you to rock comfortably, without heavy pushing, reducing muscle fatigue.

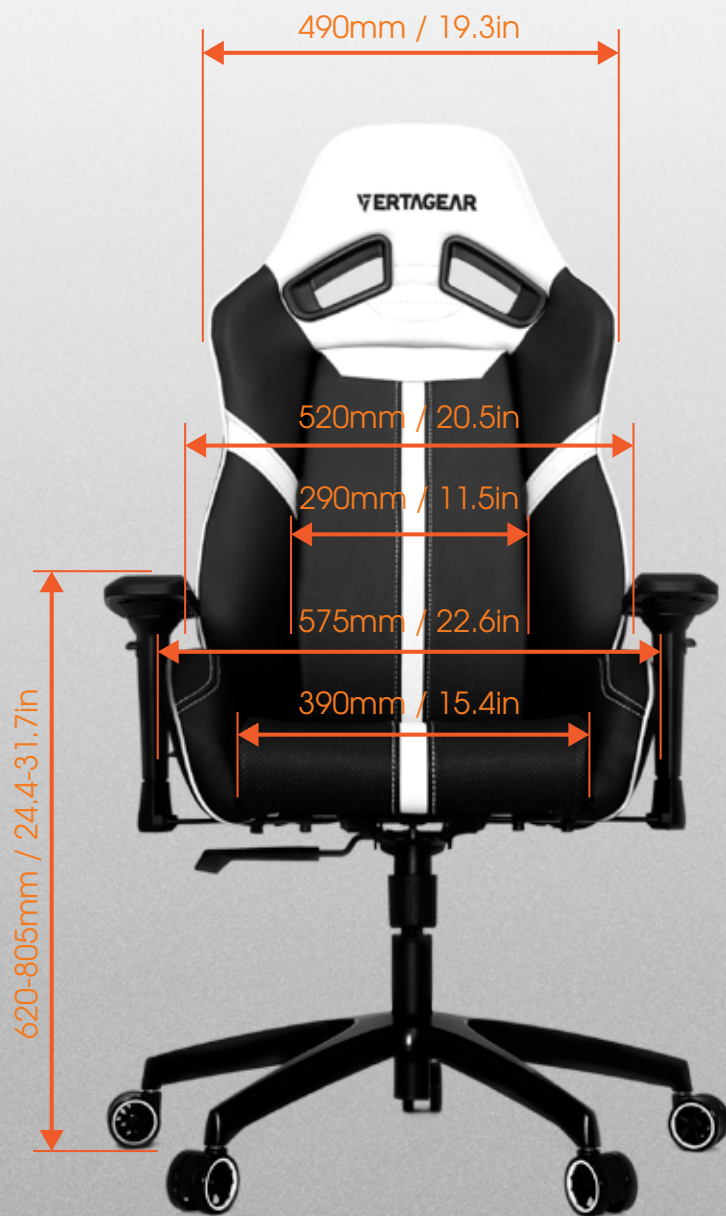


Adjustable 4D Armrests

4D customizable armrest provides a natural support of the arms with greater range of width and height adjustments. Benefits includes better blood flow and eliminates pain and injury to the wrist and arms.



Product Dimensions



Specifications & Color Options



VG-SL5000_CB

VG-SL5000_RD

VG-SL5000_BL

VG-SL5000_GR

VG-SL5000_WT

Model:	VG-SL5000	Overall height (incl. base):	1235-1335 mm / 48.6-52.6 in
Colors:	Carbon Black / Red / Blue / Green / White	Backrest Width (shoulder):	490 mm / 19.3 in
Max Load:	150 kg / 330 lbs	Backrest Width (lumbar):	520 mm / 20.5 in
Materials:	Steel (frame), High Density Foam, PVC Leather, Aluminum Alloy (base)	Seat Width:	575 mm / 22.6 in
Package Dimension:	83 x 72 x 37.5 cm / 33 x 28 x 15 in	Seat Depth:	480 mm / 19 in
		Net Weight:	27.5 kg / 60 lbs
		Gross Weight	28 kg / 62 lbs
		Container:	140 pcs (20')
			308 pcs (40'HQ)

VERTAGEAR

Racing Series
SL5000



"You'll be hard pressed to find a better option"



"Vertagear's build quality is milles ahead."



"I fall into it, and never want to get out of it."

Vertagear S-Line SL5000 Racing Series Gaming Chair Rev. 2

A gamer's delight, the SL5000 will hit the sweet spot for extreme gamers. The racing-style gaming chair empowers your everyday gaming with the right features and high-end material quality. The SL5000 is designed to give a wide range of adjustability that provides gamers with the best personal comfort and ergonomic support for extended periods of time. The high backrest and dense foam padding ensures greater neck, shoulder, and lumbar support all the way through.

Highlight Features



Effortless Assembly

A patent pending "Slide-In" design mechanical structure that requires no more than one person to assemble.



Sturdy Steel Frame

Ensures long lasting durability, while keeping the chair secure, stable, and comfortable at all times.



Ultra Premium High Resiliency Foam

Our foam stands up to a density of 4lbs per cubic foot, compared to standard High Resiliency foam of only 2lbs, adding greater durability and comfort.

Additional Features



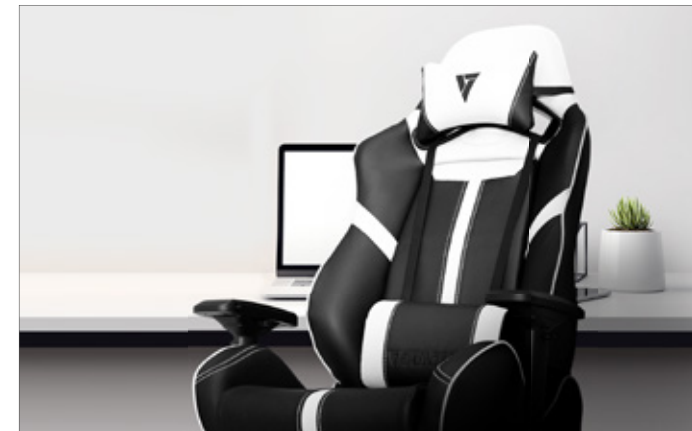
Penta RS1 65mm/2.5" Caster

Custom racing style caster coated with polyurethane (PU) for soft and smooth gliding on any surface. (color matching chair)



Reinforced 5-Star Base

The SL5000's 5-star base (made from aluminum alloy) keeps the chair solid, stable, and lightweight.



Extra Accessories: Cushions

Additional Memory Foam Neck Support and Lumbar Support cushions are included.

Adjustability



Adjustable Seat Height



Adjustable Backrest



Adjustable Tilt with Locking System



Adjustable 4D Armrests

BIFMA

SGS

EN1335

VERTAGEAR

Comfort. Design. Vertagear.

Vertagear brings inspired design and innovative features to gaming products. We want to enrich the lifestyle of gamers with products that are expressed through experiences and offer a greater appreciation of gaming products through our design.

VERTAGEAR

Comfort. Design. Vertagear.